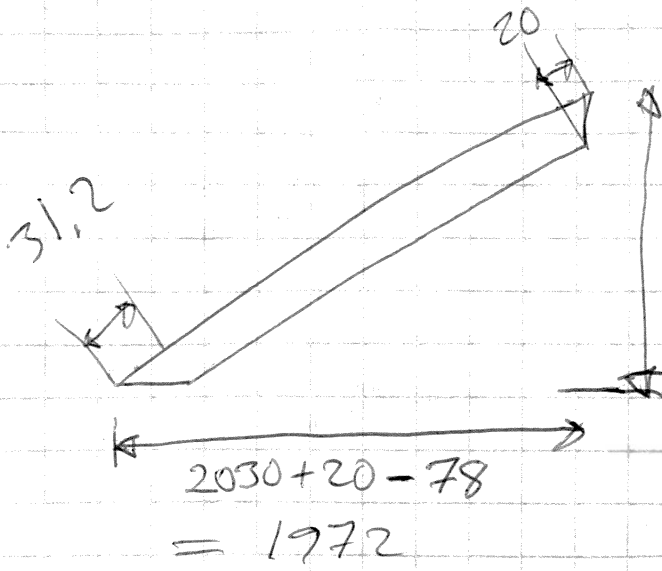


Syvys 0.6m
 hallainpö 4m



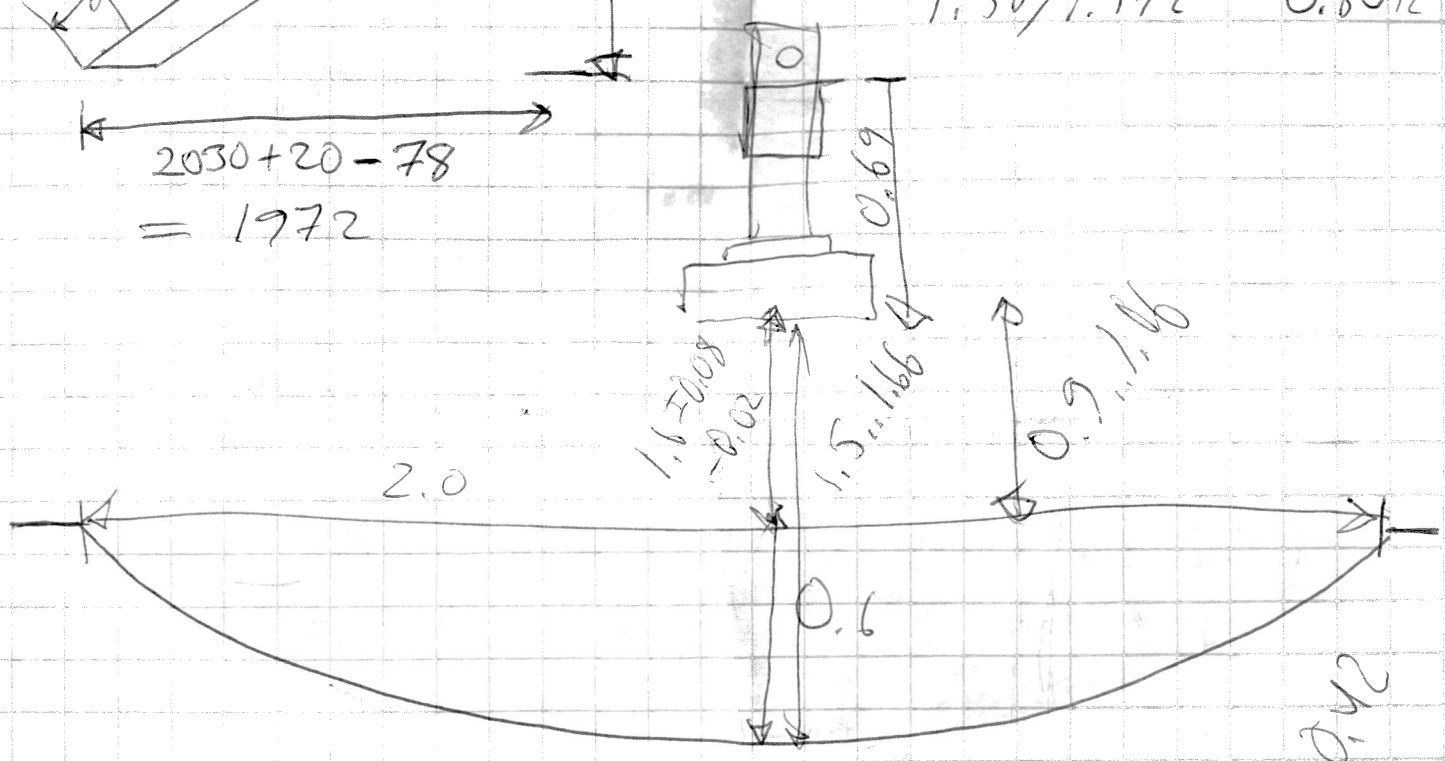
$$1.58^2 + 1.972^2$$

$$2.4964 + 3.888784$$

$$= \sqrt{6.385184}$$

$$= 2.527 \text{ m}$$

$$1.58 / 1.972 = 0.8012$$



Syvys
 hall = 1/6 @ 1/10 = 0.15

$$\frac{0.6}{4} = 0.15$$

Secd. 1/10 0.38 = 0.42

$$f = 1.6 \pm 0.08$$